

Wildland Fire Resiliency

Michael Gorman-Foothills Area Manager
Chelsea Young-Field Resource Specialist

04/23/2025



Annual Disking

Overview



Wildland Fire Resiliency Program

- Equipment and Infrastructure
- Personnel
 - Rangers Role
 - Resource Crew Role
 - Equipment Operators Role
 - Biological Monitors
- Vegetation Management Projects
 - Planned and completed projects
 - Ongoing Maintenance

Equipment

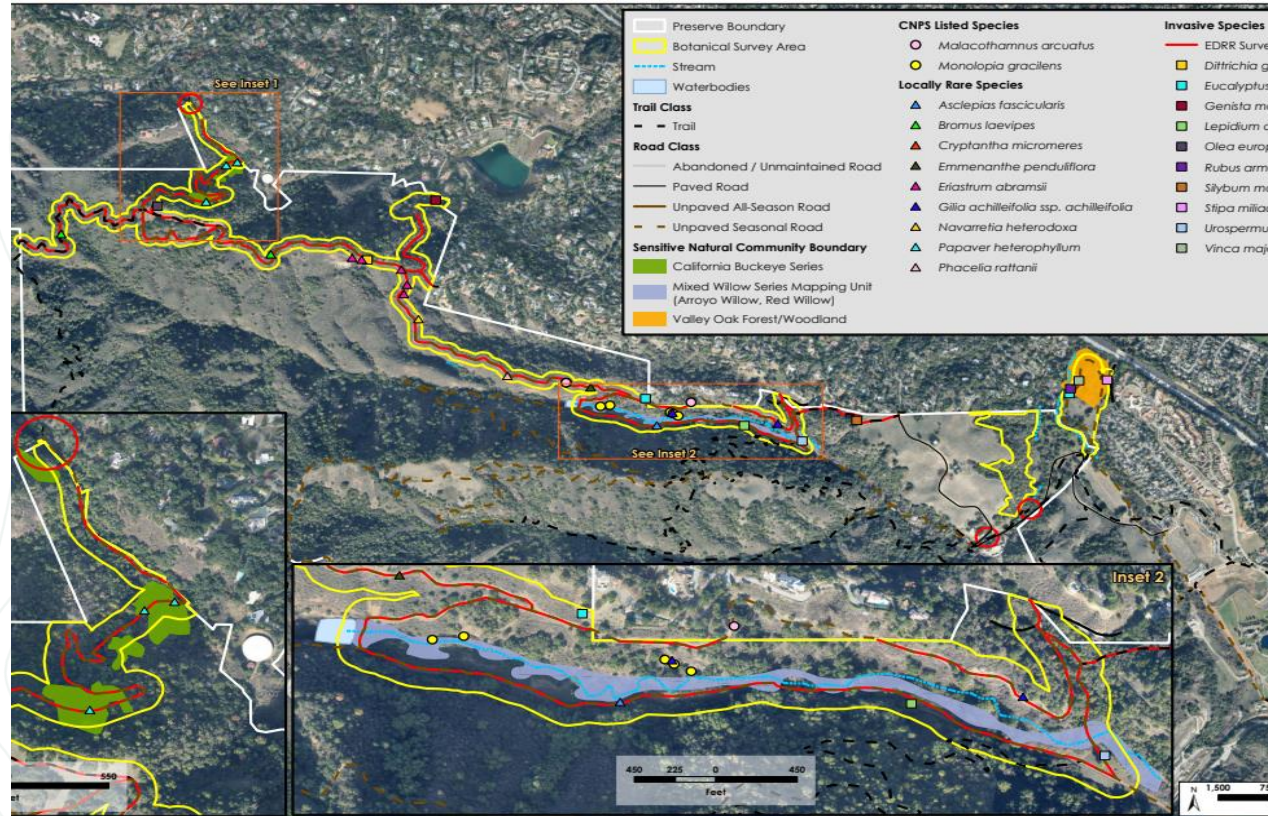
- Type 6 fire engines
- Water Tenders
- Fire equipment boxes
- Fire Hydrants
- Robo Max
- Tractors
- Various mowing implements



Hydrants in Rancho San Antonio



Vegetation Management Project



Western boundary Rancho San Antonio

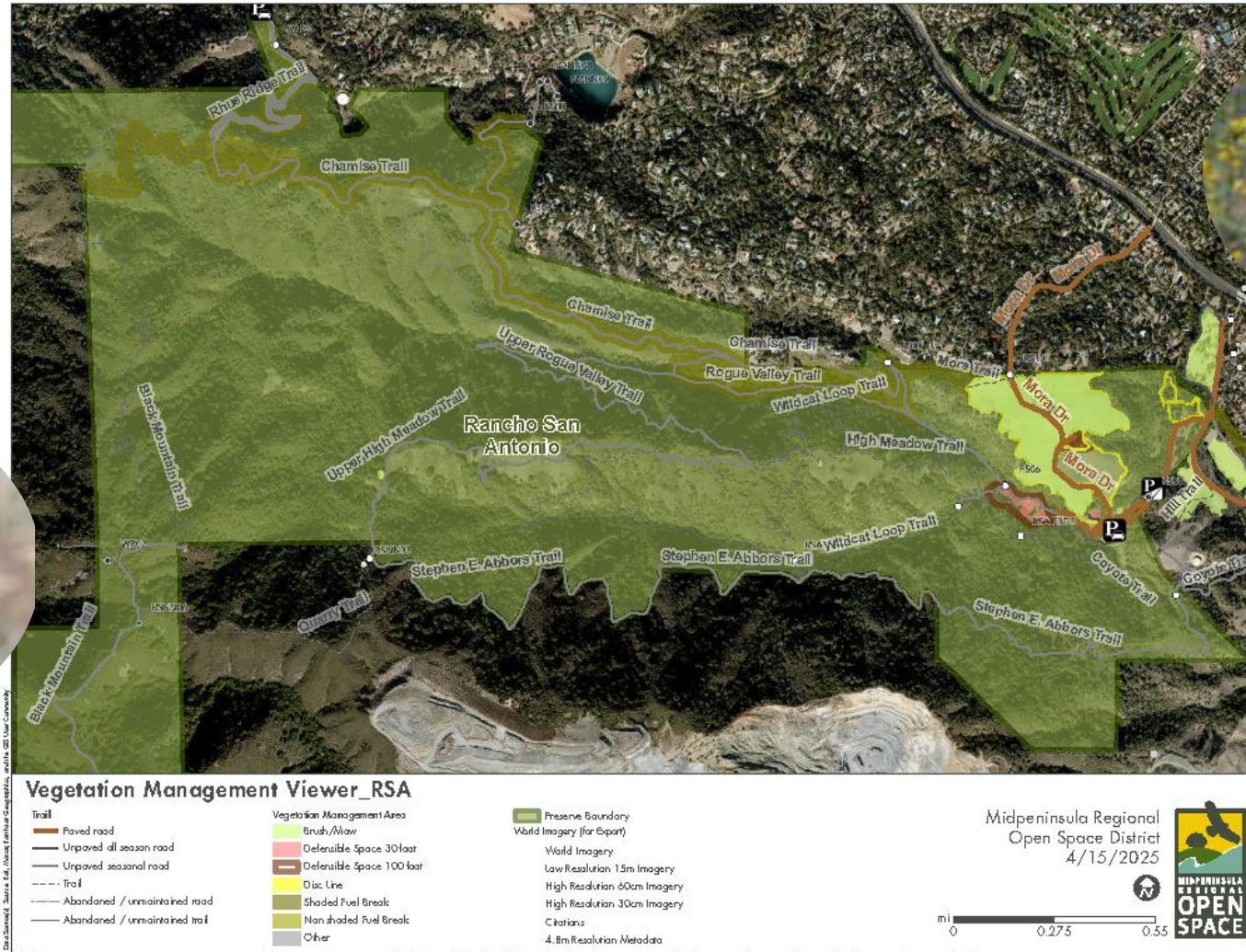
• Fuel Break

- Remove shrubs and lower limbs of trees
 - Create vertical space
- Thin out spacing by removing select trees under 6 inches in diameter
 - Create horizontal space
- 30-50 feet on each side of the trail

Vegetation Management

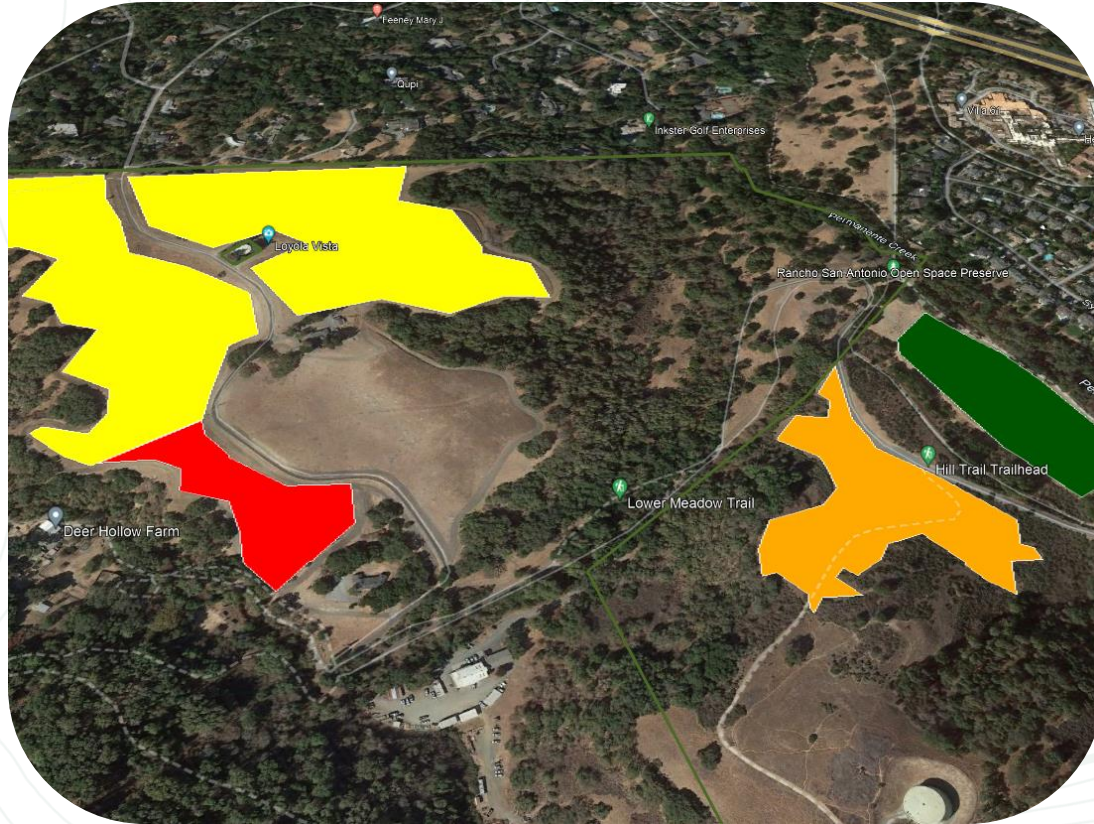


California Gilia
(*Gilia achilleifolia* ssp.
Achillefolia)



Woodland Woollythreads
(*Monolopia gracilens*)

Enhanced Mowing Areas



2024 Yr 1

- Reduce fire risk by reducing fuel load
- Benefit the grassland's health and resilience
- Promote Biodiversity
- Provide critical habitat for diverse plants and animals

increase in wildflowers

Partnership and Collaboration



- Santa Clara County Firesafe Council
- CAL FIRE
- Los Altos Hills County Fire District
- Santa Clara County Fire
- Santa Clara County Parks
- Santa Cruz Mountain Stewardship Network
- Valley Water
- San Jose Water
- CalWater

How you can get involved



- **Defensible Space Permit** program for Midpen neighbors
- Build a **Firewise Community**
- Get involved in **Volunteer** opportunities with us!

Questions?

openspace.org

info@openspace.org



Los Trancos, Thirumalai Suresh