



Santa Clara County Fire Overview

Communities Served

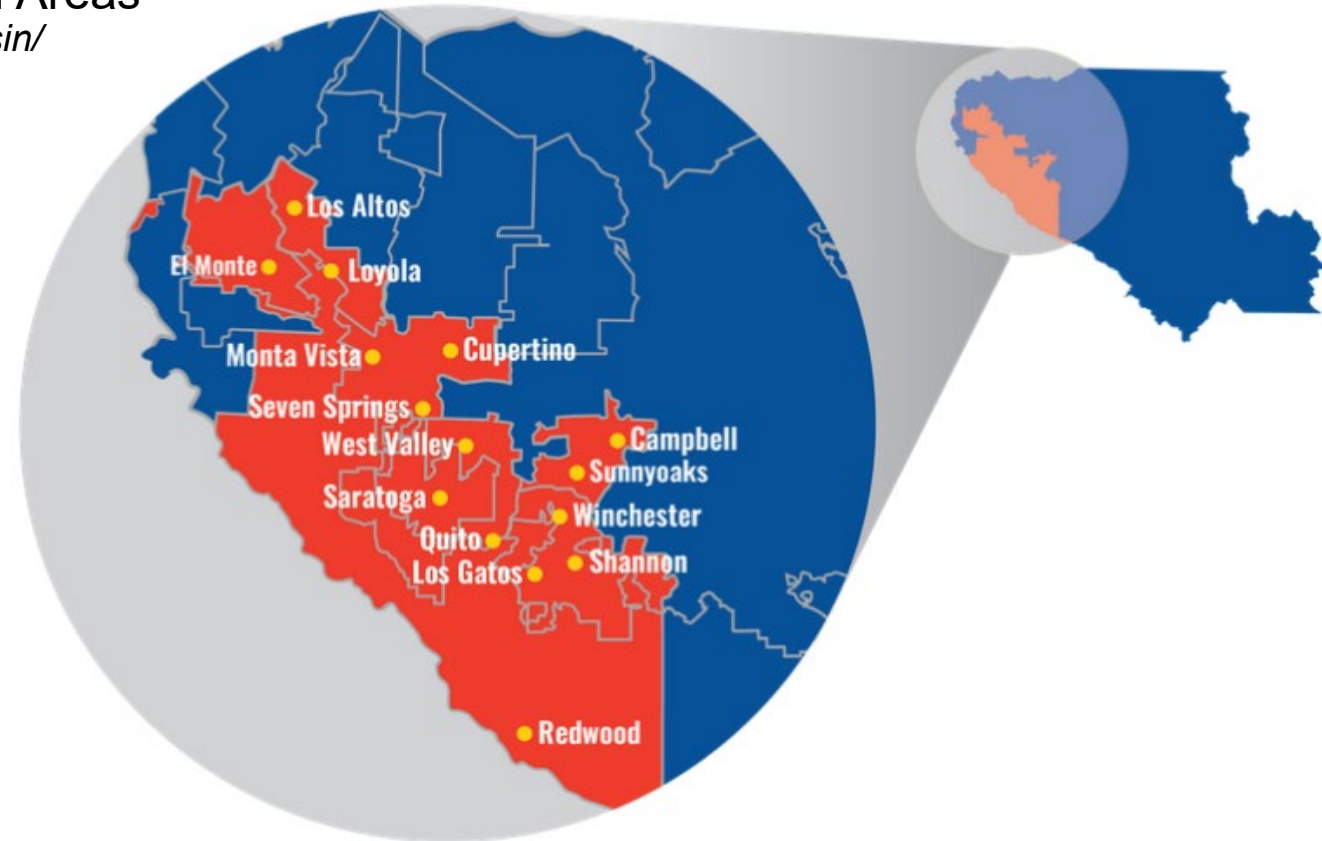
- ✓ Campbell
- ✓ Cupertino
- ✓ Los Altos
- ✓ Los Altos Hills
- ✓ Los Gatos
- ✓ Monte Sereno
- ✓ Saratoga
- ✓ Unincorporated Areas
*(incl. Lexington Basin/
Summit)*

Service Area

- ✓ 132 square miles (267 square km)
- ✓ 226,000 population served

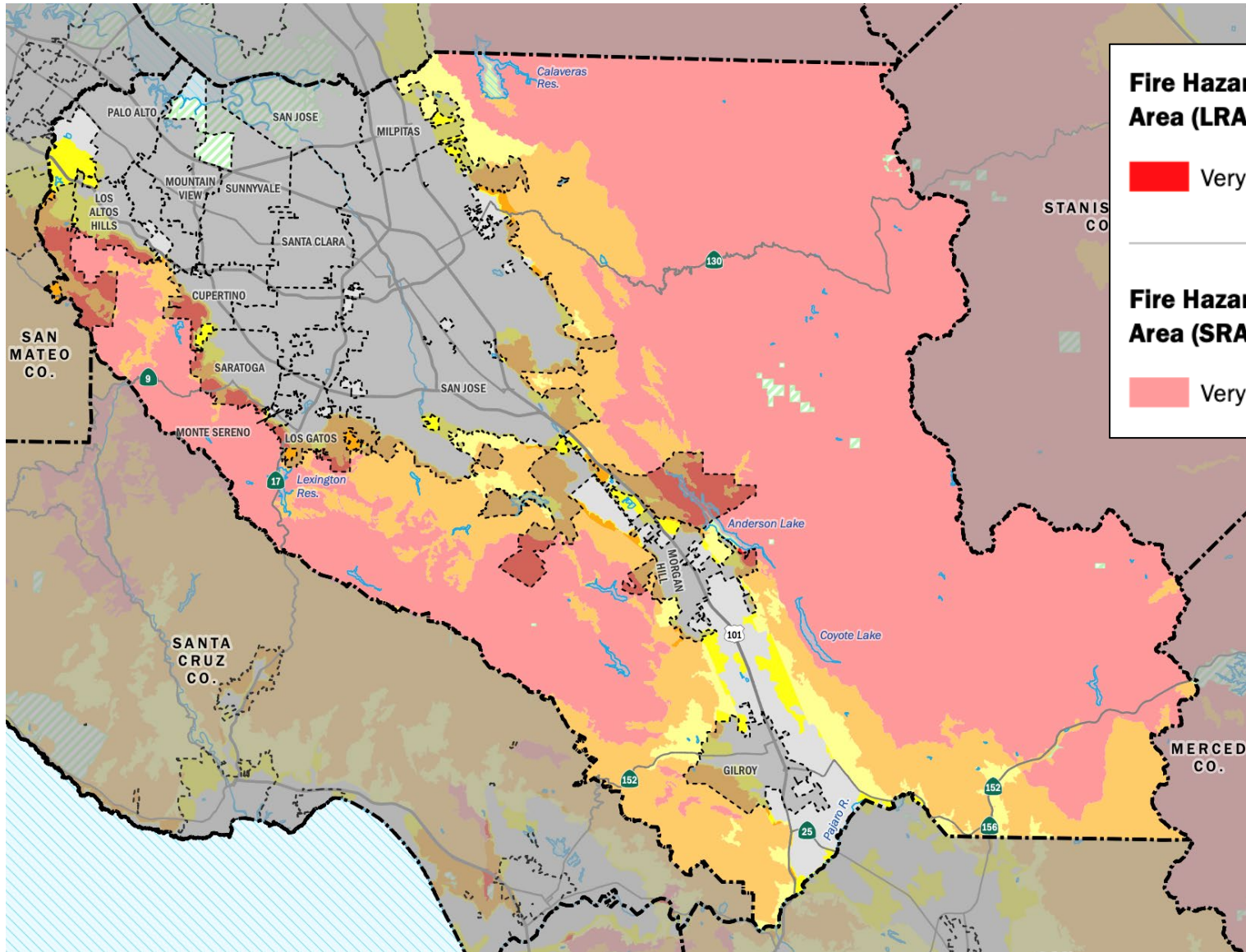
Emergency Response

- ✓ 330 Employees
- ✓ 15 fire stations
- ✓ 19 companies + 3 battalion chiefs
- ✓ 66 firefighters on duty daily





Wildland Areas Within Santa Clara County



Fire Hazard Severity Zones (FHSZ) in Local Responsibility Area (LRA), as Identified by the State Fire Marshal

Very High High Moderate

Fire Hazard Severity Zones in State Responsibility Area (SRA), Effective April 1, 2024

Very High High Moderate

- 550,000 acres
- 200,000 acres are 'dual responsibility'
 - Mutual Threat Zones (MTZ) CAL FIRE assist



Wildland Firefighter Operations

Firefighting tactics are adapted to work with limited water supply:

- **Response Engines**

- ✓ Type 1, 3 & 6 engines carry their own water for firefighting & have specialized equipment that allows them to refill from natural or nearby sources (*i.e. pools, creeks, or ponds*)
- ✓ This helps crews stay effective even in areas without fire hydrants

- **Water Tenders**

- ✓ Transport large amounts of water
- ✓ Have the ability to carry portable tanks that can be set up in strategic locations, giving fire engines a place to refill when fighting fires in remote areas

- **Mapping Software**

- ✓ All fire apparatus utilize mapping software to locate fire hydrants & alternative water sources (*i.e. reservoirs, creeks, water tanks, pools*) ensuring efficient water resource management during operations





www.sccfd.org/rsg

READY

- Harden Your Home
- Defensible Space ZONES
- Smart Landscaping

SET

- Wildfire Action Plan | Supply Kits
- Family Communication Plan
- Insurance Preparedness

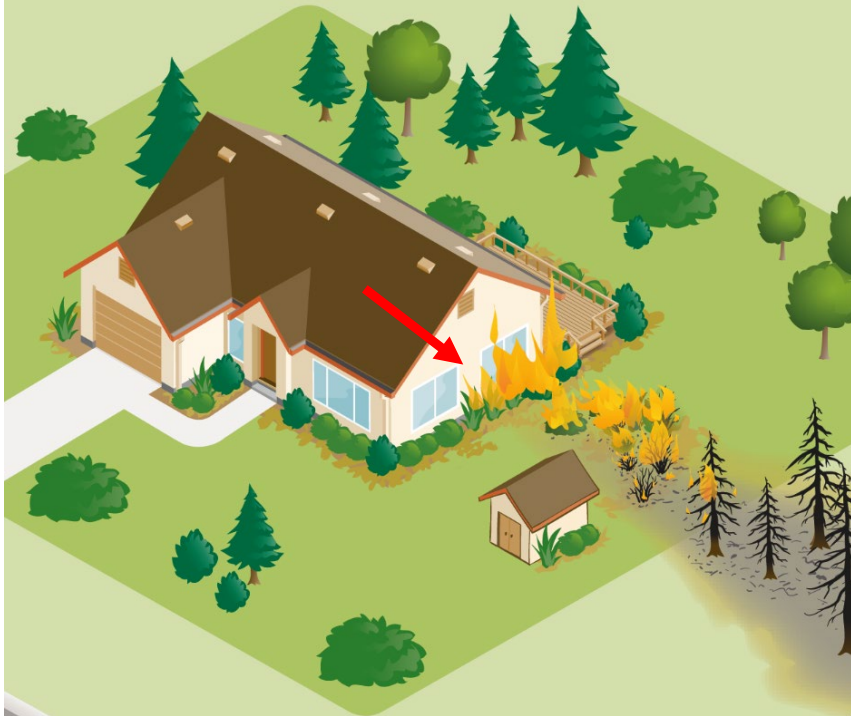
GO

- Evacuation Readiness
- Emergency Evacuation terminology
- Staying Informed

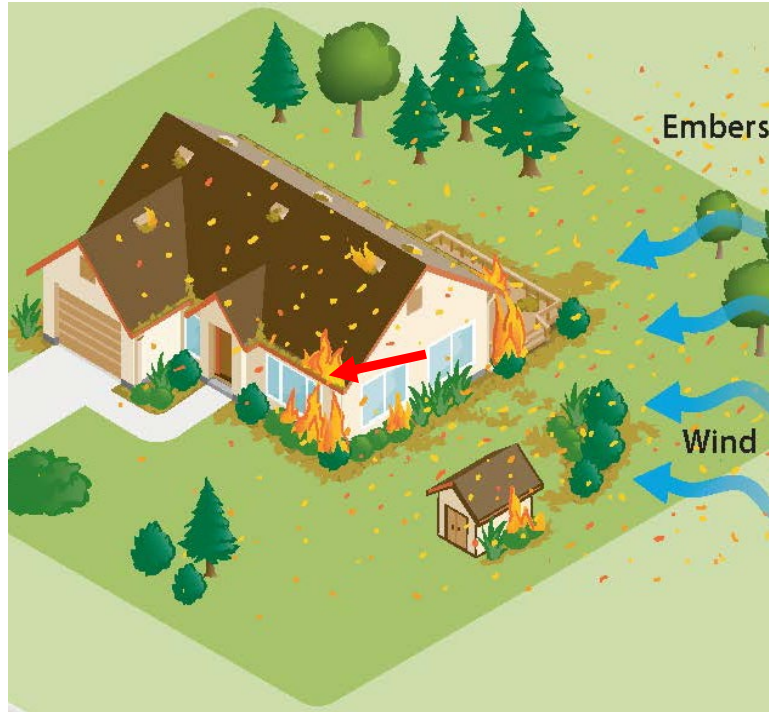


Three Types of Fire Exposure

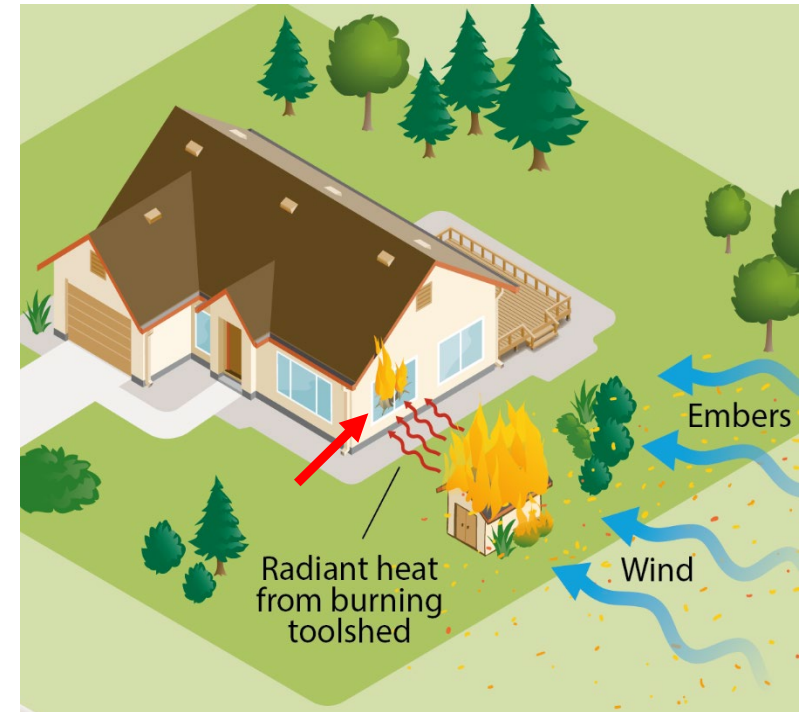
Direct Flame Contact



Embers



Radiant Heat



Images courtesy of CAL FIRE

Defensible Space strategies have focused on how to reduce *direct flame contact*.
Preparing for embers and radiant heat exposures takes a different approach.



Install 1/8" Mesh on Vents



Clear Debris from Gutters & Roof



Maintain Paint on Eaves & Fascia Boards



Remove Combustibles & Enclose Space Under Decks

HOME HARDENING



Use Class A Non- Combustible Roofing Materials



Seal Gaps in Siding, Eaves & Doors



Install Double Pane Windows

DEFENSIBLE SPACE ZONES

ZONE 0

0 - 5'

Ember Resistant Zone

ZONE 1

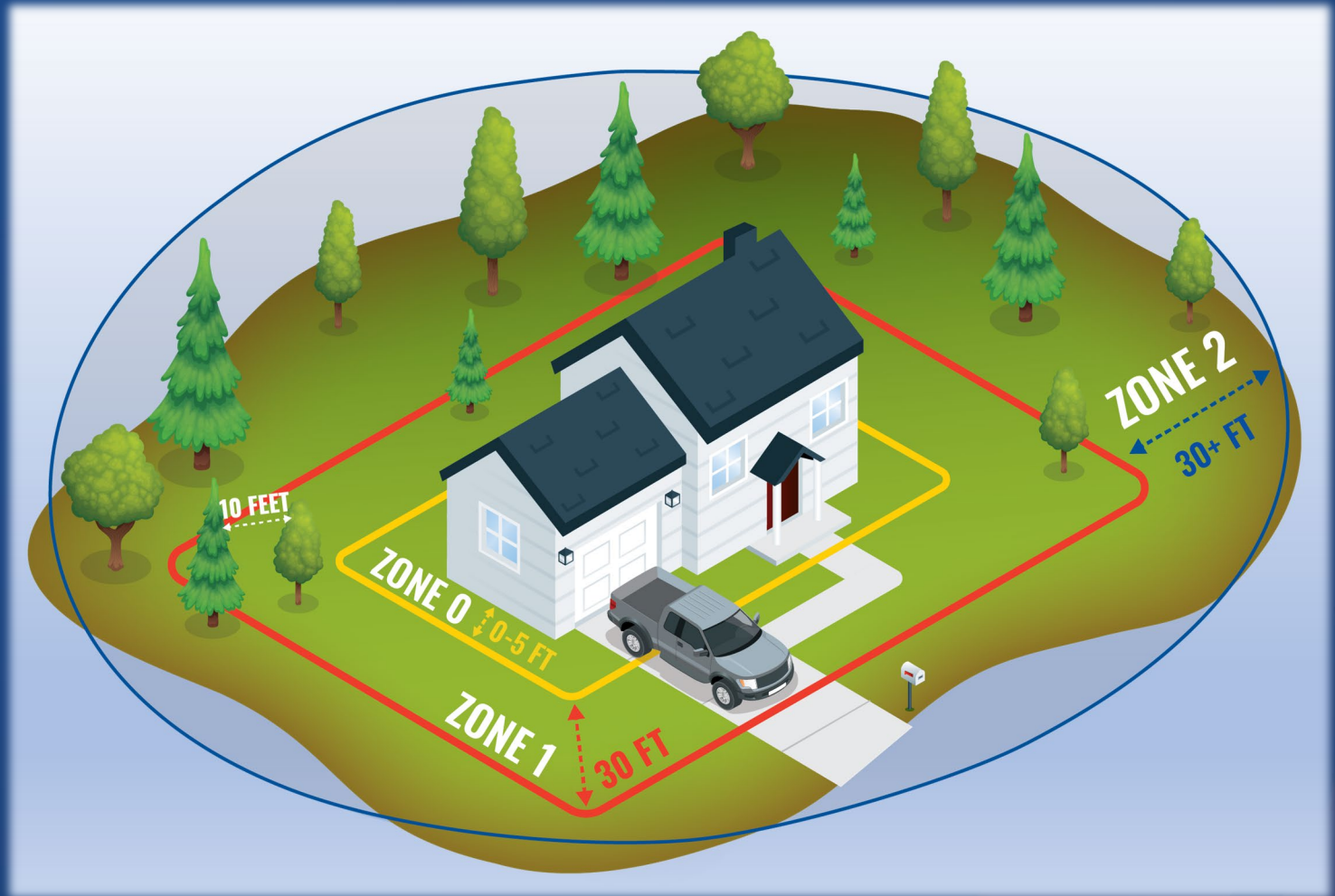
5' - 30'

Lean, Clean & Green Zone

ZONE 2

30' - To Property Line

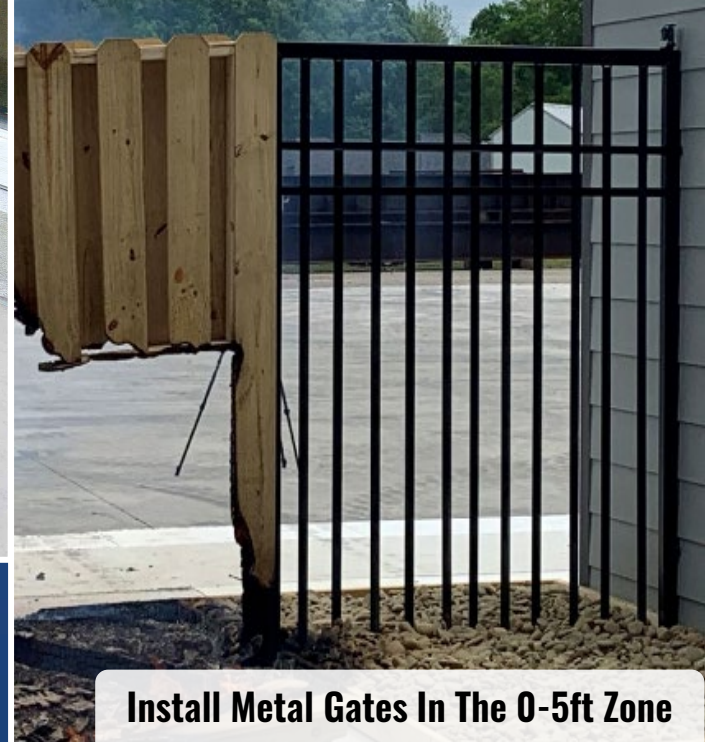
Fuel Reduction Zone



Non-combustible patio furniture



Replace natural fiber doormats with Ignition Resistant Materials



Install Metal Gates In The 0-5ft Zone

ZONE 0
0 - 5'

Relocate Trash Cans Outside 0-5ft Zone



Hardscape Yards



Remove All Combustible Materials



Remove Dead Leaves & Pine Needles



Use Rocks In Place of Mulch & Properly Space Vegetation

ZONE 1
5' – 30'



Limb Up Trees 6-10' From Ground



Choose Fire Resistant & Drought Tolerant Vegetation

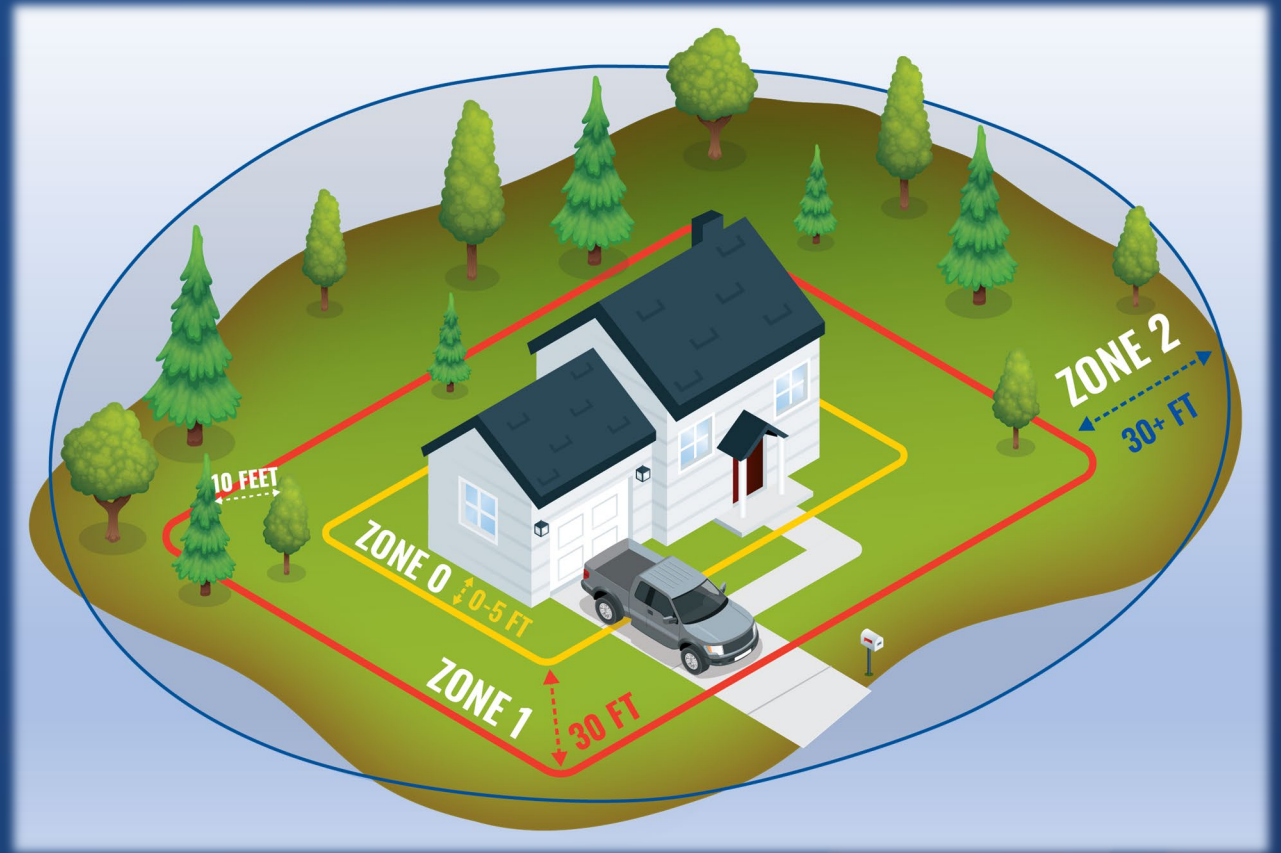


Clear Vegetation Around Fences & Structures

ZONE 2

30' – To Property Line

Reduce Fuel Load





Create Space Between Trees



Remove Leaves, Needles & Small Branches



Create Vertical Clearance

ZONE 2

30' – 100' or To Property Line



Limb Trees 6+ Feet



Cut Annual Grasses



Clear Vegetation Around LPG Tanks



Get SET

Create A Wildfire Action Plan to Include:

- **Develop a Communications Plan**
 - ✓ *Create an Emergency Contact List (Family, friends, neighbors)*
 - ✓ *Designate an out-of-area contact to act as single point of contact*
- **Create an Evacuation Plan**
 - ✓ *Designate a meeting place outside of fire/hazard zone*
 - ✓ *Identify multiple evacuation/escape routes*
 - ✓ *Include a plan for pets & large animals*
- **Remember the SIX P's**
 - ✓ *People/pets*
 - ✓ *Papers, phone numbers, and important documents*
 - ✓ *Prescriptions, vitamins, eyeglasses*
 - ✓ *Pictures & irreplaceable memorabilia*
 - ✓ *Personal Computer*
 - ✓ *"Plastic" (credit cards, ATM cards) & cash*

FAMILY COMMUNICATION PLAN

Fill out this form and place it near your telephone where it can easily be found by everyone in your household. Copy the form and keep it in your Emergency Supply Kits. This will allow all family members to have access to this key information in case you get separated.

IN CASE OF EVACUATION, WE WILL MEET AT:


OUT-OF-AREA EMERGENCY CONTACT:

Name: _____ Relationship: _____
Home Phone: _____ Cell Phone: _____
Email: _____

OTHER IMPORTANT NUMBERS:

Emergency 911: _____ Other: _____
Fire Department: _____ Other: _____
Police: _____ Other: _____

OUR TWO EVACUATION ROUTES (SKETCH BELOW):

 www.sccfd.org





Get SET

Have an Evacuation 'Go Bag' & include essentials:

- Non- Perishable food & water (*3-day supply/per person*)
- Copies of important documents (*birth certificates, passports, etc.*)
- Electronic/solar chargers
- Home Inventory (*videos/photos*)
- Flashlight & batteries
- First aid kit
- Change of clothes
- Sturdy shoes
- Medications & glasses
- Sanitation supplies
- Currency (*credit cards, cash, or checks*)
- Map
- Pet supplies



If time allows, pack valuables & irreplaceable items



GO!

When Evacuating

- ✓ Follow your Wildfire Action Plan
- ✓ Put wildfire “Go Bag” & pets into vehicle
- ✓ Wear protective clothing & sturdy shoes
- ✓ Check on neighbors *(if time permits)*
- ✓ Use pre-determined evacuation routes

Before You Go

- ✓ Turn off gas & pilot lights
- ✓ Leave lights on & doors unlocked
- ✓ Do not shut off water

Stay Informed

- ✓ Utilize local news & emergency alert notification systems for evacuation route updates
- ✓ Adhere to instructions from local emergency services & authorities



Images courtesy of CAL FIRE



STAY INFORMED



- Santa Clara County's official emergency alert system: Provides residents with critical updates on natural disasters, public safety threats & other emergencies
- Residents can sign up for **free** notifications via text, phone call, or to stay informed about local incidents affecting their area

Register at: www.alertscc.org

genasys Protect

- **Know Your Zone:** Look up your address online or via the Genasys App to find evacuation information for your area
- Access to real-time alerts for disasters, evacuations & other critical situations
- Emergency notifications are sent via text, calls, emails & social media

Find Your Zone: Protect.genasys.com or Genasys App



Social Media

- Follow credible sources for real time information
(i.e. local Fire Departments, Law Enforcement Agencies, EMS)



@sccfiredept

STAY INFORMED

Red Flag Warning

- Indicates critical fire weather conditions, such as strong winds, low humidity, & dry vegetation, increasing the risk of wildfires
- Issued by the National Weather Service (NWS), these warnings alert firefighters, emergency responders & the public to take precautions & avoid activities that could spark a fire
- During a warning, residents should follow local fire restrictions & stay updated on emergency alerts.



LOW RELATIVE
HUMIDITY



STRONG WINDS



DRY FUELS



POSSIBILITY OF DRY
LIGHTNING STRIKES





Thank you!

Connect With Local Agencies



American Red Cross
www.redcross.org
408.577.1000



Office of the Sheriff
sheriff.santaclaracounty.gov/home
408.808.4400



California Department of Insurance
www.insurance.ca.gov
800.927.4357



PG&E
www.pge.com
800.743.5000



CAL FIRE
www.fire.ca.gov



Santa Clara County FireSafe Council
www.sccfiresafe.org
408.975.9591



Consumer Environmental Protection Agency
<https://cepa.santaclaracounty.gov/home>
408.918.4600



Santa Clara County Fire Department
www.sccfd.org/rsg
408.378.4010



**Firewise
Community Leaders**
www.nfpa.org/education-and-research/wildfire/firewise-usa



**Santa Clara County
Office of Emergency Management**
emergencymanagement.sccgov.org
408.808.7800



Animal Disaster Preparedness & Response
halterproject.org
707.318.7526



MidPen Open Space
www.openspace.org
650.691.1200



Valley Water
www.valleywater.org
408.265.2600

