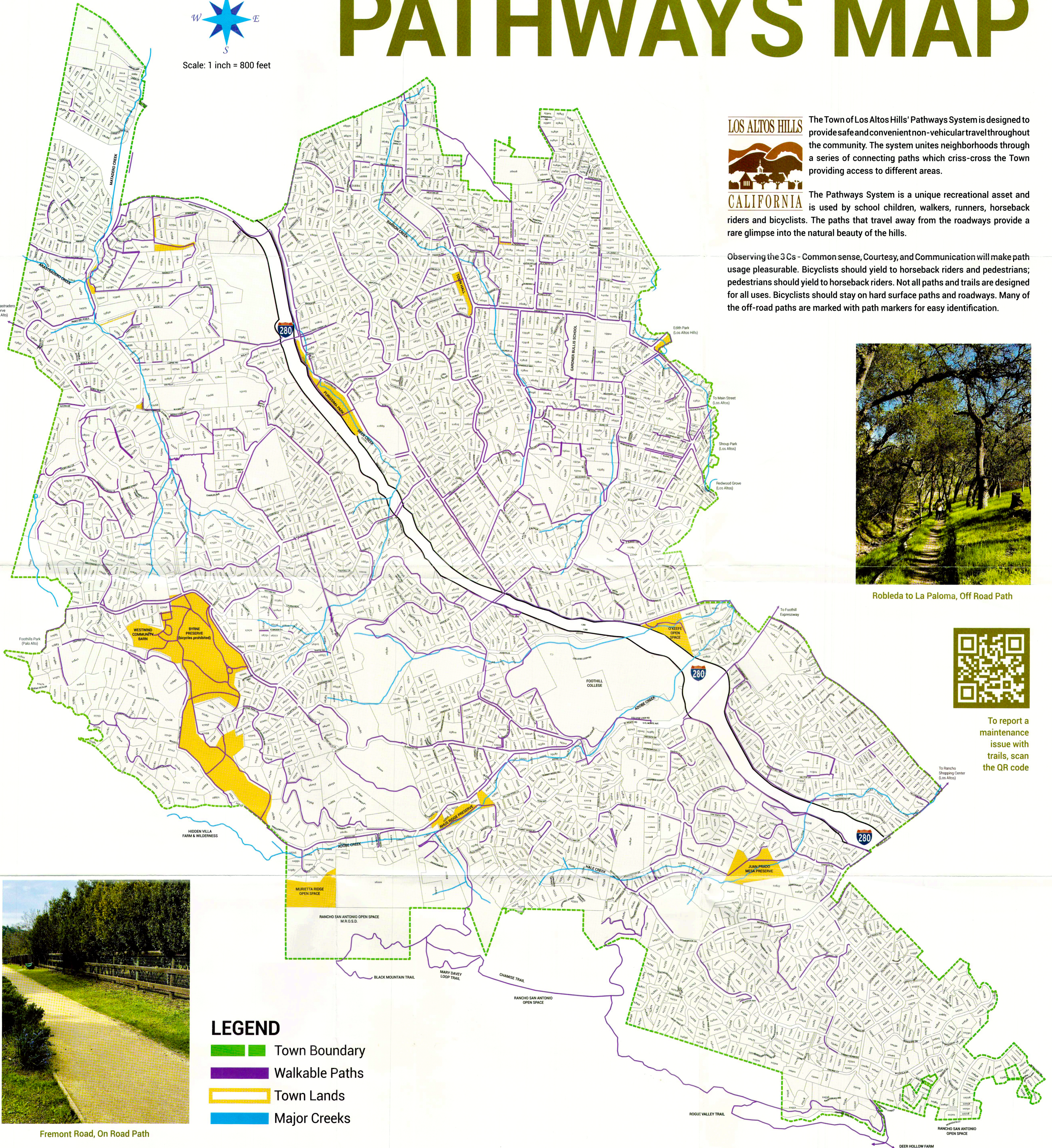


Scale: 1 inch = 800 feet

PATHWAYS MAP



LOS ALTOS HILLS

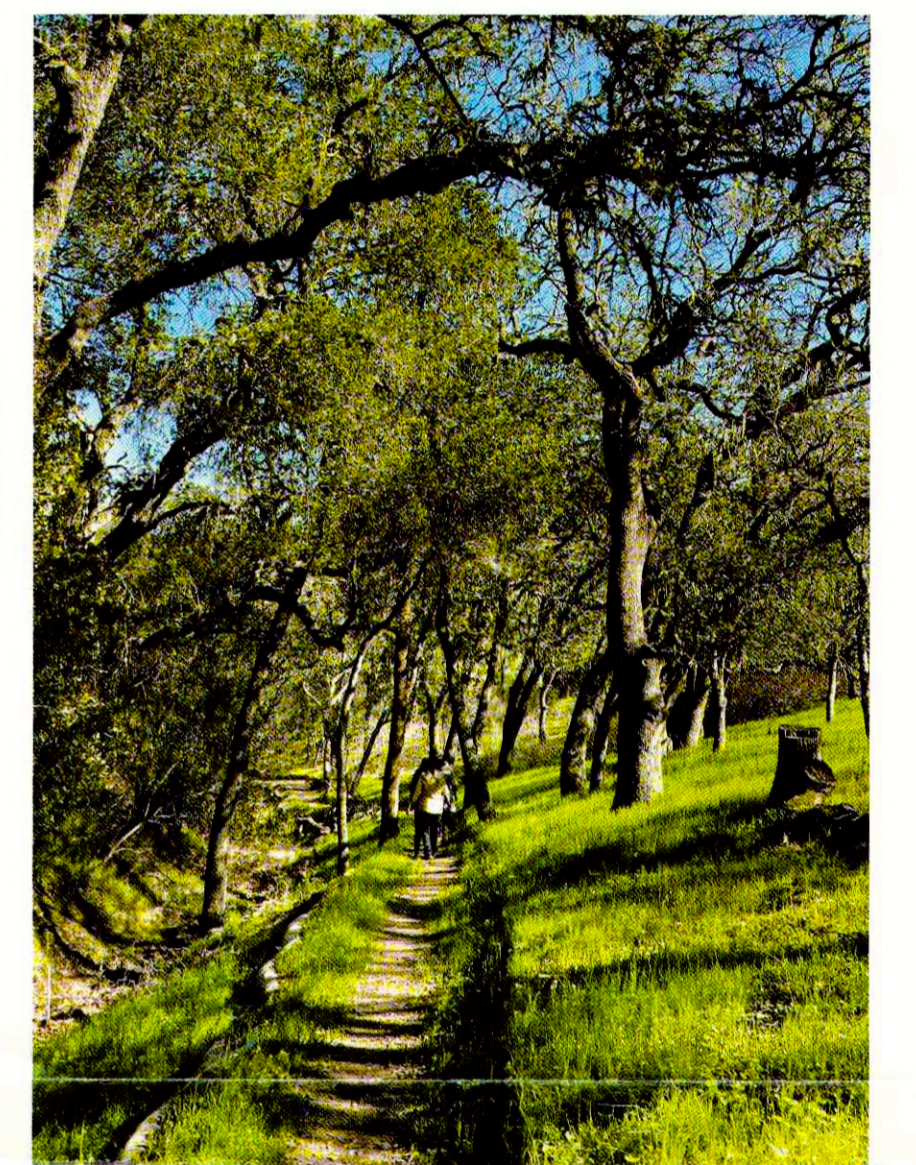


CALIFORNIA

The Town of Los Altos Hills' Pathways System is designed to provide safe and convenient non-vehicular travel throughout the community. The system unites neighborhoods through a series of connecting paths which criss-cross the Town providing access to different areas.

The Pathways System is a unique recreational asset and is used by school children, walkers, runners, horseback riders and bicyclists. The paths that travel away from the roadways provide a rare glimpse into the natural beauty of the hills.

Observing the 3 Cs - Common sense, Courtesy, and Communication will make path usage pleasurable. Bicyclists should yield to horseback riders and pedestrians; pedestrians should yield to horseback riders. Not all paths and trails are designed for all uses. Bicyclists should stay on hard surface paths and roadways. Many of the off-road paths are marked with path markers for easy identification.



Robleda to La Paloma, Off Road Path



To report a maintenance issue with trails, scan the QR code



Fremont Road, On Road Path

LEGEND

-  Town Boundary
-  Walkable Paths
-  Town Lands
-  Major Creeks

Note: For recreational purposes only. This map is not an official Town General Plan document. As additional pathways are cleared and rehabilitated, they will be shown on future maps.

©Town of Los Altos Hills March 2023