

GAS SAFETY AFTER EARTHQUAKES

Turn **OFF** the gas **ONLY** when:

1. You **smell** natural gas, *or*
2. You **hear** a hissing sound, *or*
3. You **see** the gas meter dial spinning

Leave the gas on unless you notice any of the above.

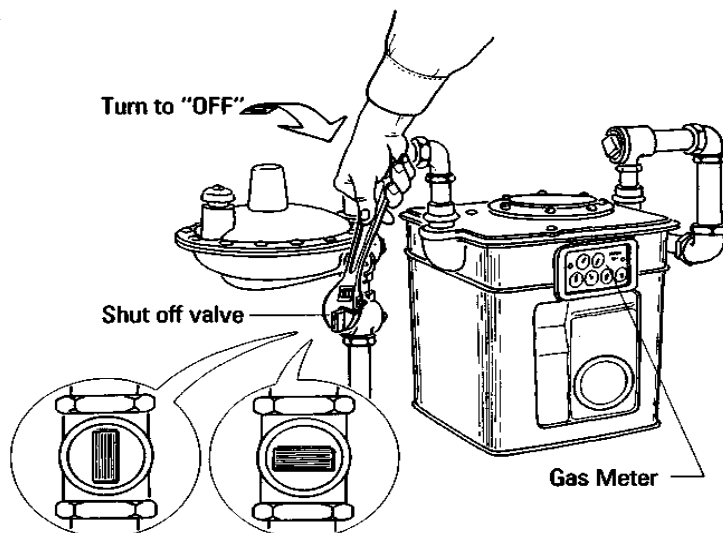
If you turn off the gas, PG&E must turn it back on for you...Never turn gas back on yourself!

Check your gas valve periodically by turning it 1/8 turn in either direction and then turning it back 1/8 turn to the vertical ON position. A 1/8 turn will not turn your gas off. Use a 10-12" crescent wrench or other gas shutoff tool. Contact PG&E if you are unable to turn the valve.

How to Turn Gas OFF

Turn the valve 1/4 turn, in either direction, so the valve is crosswise or horizontal to the pipe.

GAS SHUT-OFF



Los Altos Hills Office of Emergency Services
26379 Fremont Rd., Los Altos Hills 94022
650-941-7222
www.losaltoshills.ca.gov/emergency