



## MOODY/ EL MONTE ROAD

### ESCAPE ROUTE PROJECT

#### SCOPE OF WORK

##### **Introduction:**

Moody and El Monte Roads in Los Altos Hills, California, represent a significant thoroughfare for the Los Altos Hills Community. From Page Mill Road, Moody and El Monte serve as a continuous path to Highway 280. Therefore, these roads exist as egress in the case of fire. To secure this egress's integrity, Los Altos Hills County Fire District and Santa Clara County Firesafe Council propose a roadside treatment of fuels.

##### **Project site:**

Moody and El Monte Road, starting at the intersection of Moody and Page Mill Roads continuing east towards Highway 280, concluding at Stonebrook Drive. The total length of road in the project area is 3.5 miles one way. Therefore, the treatment will be 7 miles, including both sides of the road.

##### **Site concerns:**

The road is narrow, winding, and at times steep. It is a significant commute corridor for residents of Los Altos Hills. Recreational bicyclists also favor the road. Therefore, vehicles can be moving very fast, and bikes can be moving very slow. Bicycles are usually silent and may escape notice as they travel through the work area past the chipper. Curves in the road may cause radio transmission problems due to hills blocking line-of-site. Two weeks prior to the start date of the evacuation route, an informational A frame will be displayed on site.

##### **Traffic Control:**

The project will require traffic control, including submitting a traffic control plan and obtaining an encroachment permit to park vehicles and chippers in the road and protect workers and the public's safety. The Fire Safe Council will secure the encroachment permits for traffic control and coordinate the process with Los Altos Hills. Los Altos Hills permits will not require a fee. More specific information can be provided upon request.

**Jurisdictions and funders involved:**

Los Altos Hills County Fire District (LAHCFD)

**Goals for this project:**

- 1) Trim woody vegetation and weed whip grasses and weeds adjacent to the road.
- 2) Remove dead or dying woody debris

**Treatment specifications:**

1. Hazardous fuel reduction; shaded or sunny fuel break, evacuation route clearing. In this treatment area, the crew will conduct the work 15'-30' from the roadway.
2. Road-way clearing, in the area in the travel corridor, 14' above the pavement, and out to 50' from the edge of the pavement; when dirt pullouts are encountered, the clearance should be measured from the edge of the turnout rather than the pavement. Clear all woody vegetation, brush, and tree branches in the roadway. Remove grass and dry weeds and deep accumulations of leaves. Remove any eucalyptus bark on the ground or hanging loose from trees. Short grass stubble and low-growing native green plants such as ferns under 10" in height are allowed. It is acceptable but not necessary to clear down to bare dirt.
3. This project aims to chip as much of the material as possible and cast it back onto the site. The use of a chipper will significantly reduce the amount of flammable vegetation removed from the site.
4. Chip material, branches, and woody shrubs. Chips may be broadcast onto the road edge, no thicker than 10" depth. Take care to either haul off or blow all chips from French broom only onto areas where broom was previously growing to prevent spreading seeds into uninfested areas.
5. At several locations along the project's route, there are steep slopes on either side. Those areas are susceptible to erosion; therefore, in those circumstances, we will "lop-scatter".
6. Leave any plants, shrubs, branches, trees, or animal nests identified with colored ribbon or pin flags.
7. Clear woody vegetation and branches up to 8-10 feet in height as measured from the ground. Remove woody vegetation such as French broom, toyon, chamise, manzanita, and small trees under 4" DBH. Cut shrubs and small trees off near the ground. Cuts should be square to the stem, not at an angle, and as low as practical (no punji-sticks).
8. Large downed wood from fallen trees may be left in this treatment area if over 8" in diameter. Buck large material into sections less than 10 feet in length. Cut trees up at forks and bends to allow the wood to have firm ground contact along the length of the log. Position logs so the length points up the

slope so the material cannot roll. Try to leave open areas between the logs so that logs cover not more than 25% of the site.

9. Exceptions: Some small shrubs and trees can be left scattered in this treatment area, especially if they are not growing under trees with low branches. Leave any plants, shrubs, branches, trees, or animal nests identified with colored ribbon or pin flags.
10. Clean up; Road pavement shall be swept or blown if needed to remove chips or chaff after treatment. Garbage from illegal dumping such as household waste, construction material, appliances, tires, mattresses, etc., found in the treatment area should be hauled up to a safe location on the road edge for disposal by the appropriate agency, or if removal is not feasible, marked and noted for the project manager's attention.

**Vegetation types:**

The project area's vegetation is a mix of grasses and weeds, vines, ferns, other understory plants, French broom, mixed native brush such as chamise, toyon, sage, etc. manzanita, and trees such as coast live oak, bay laurel, and madrone. Because of the road's winding nature, the treatments will be above and below the road. Also, there will be a mix of sun and shade.

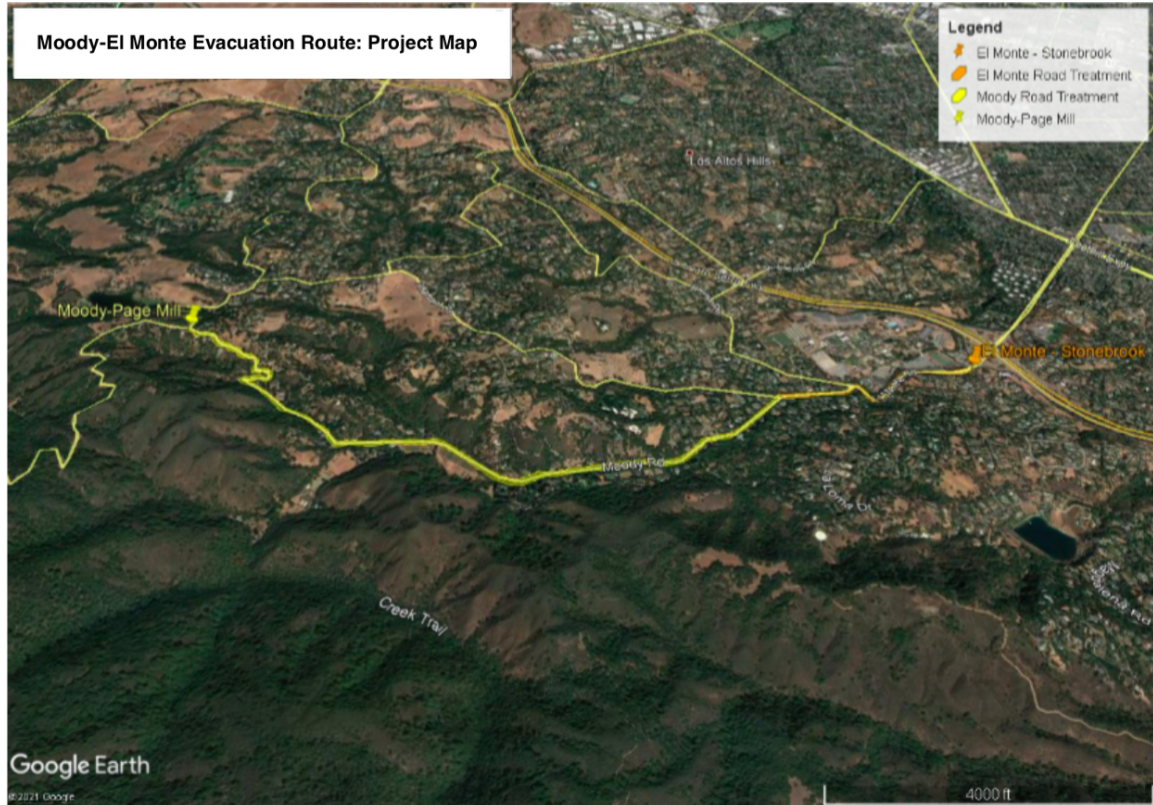
**Conservation Measures:**

1. Nesting bird survey if vegetation removal occurs between February 15<sup>th</sup> and August 31<sup>st</sup>.
2. Survey for rare plants and locally important stands of plants.
3. Mark locations of San Francisco dusky-footed woodrat houses and avoid damage (5 ft buffer)
4. Survey trees 12 inches in diameter at breast height or larger for perennial bat roosts
5. Conditions of approval from Council
6. Migratory Bird Treaty Act
7. California Fish and Game Code

## Regional Map:



## Project Map:



**For more information, please contact:**

Denise Gluhan,  
Emergency Services Manager  
Los Altos Hills County Fire District  
[dgluhan@lahcfd.org](mailto:dgluhan@lahcfd.org)  
(831)-809-0117

Jim Young  
Project Manager  
Santa Clara County Firesafe Council  
[JimYoung@SCCfiresafe.org](mailto:JimYoung@SCCfiresafe.org)  
(408)-656-9130

Irene Armstrong  
Project Manager  
Santa Clara County Firesafe Council  
[iarmstong@SCCfiresafe.org](mailto:iarmstong@SCCfiresafe.org)  
(650)516-6252